



**2025
GILEAD SUPPLIER INCLUSION
U.S. ECONOMIC IMPACT REPORT**



CONTENTS

Executive Summary	1
Economic Impact Quantified	2
National Impact	3
State Impact	4
Employment Impact	5
Impact by Business Areas	6
Tax Impact	7
Glossary	8

ECONOMIC IMPACT METHODOLOGY

The economic impact of a supply chain can be measured in many different ways. We follow a top-down approach by using a well-known and highly accurate model called Input-Output (I/O) model in calculating the impact of Gilead supply chain of small and diverse suppliers. An Input-Output model is a type of applied economic analysis that tracks the interdependence among various industries in an economy; it measures the relationship between a given set of demands for final goods and services, and the inputs required to satisfy those demands. This model is widely applied in the industry to calculate the supply chain ripple effects including direct, indirect and induced impacts.

Originally developed by Wassily Leontief at Harvard University using data from the U.S. Bureau of Labor Statistics, I/O models are utilized by both public and private institutions to perform economic impact analysis. We have teamed up with IMPLAN, a leading economic impact modeling software provider, to conduct accurate and in-depth analysis and deliver this report for Gilead.

TYPES OF IMPACT



DIRECT IMPACT
(GILEAD'S PURCHASES)

Gilead's supplier spend in each state with small and diverse suppliers



INDIRECT IMPACT
(SUPPLY CHAIN)

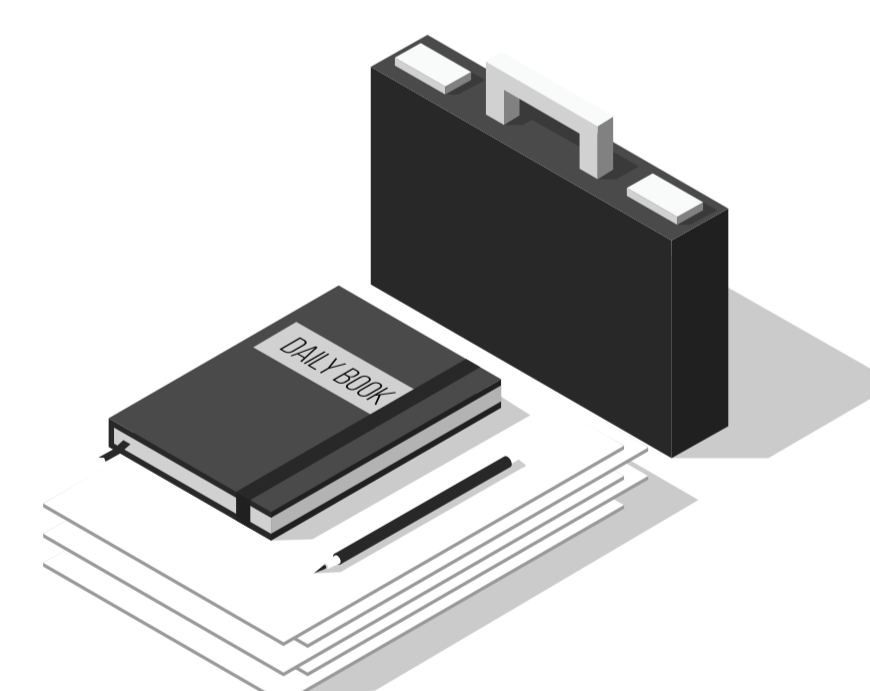
Gilead's purchase of intermediate inputs, tracked backward through the supply chain



INDUCED IMPACT
(COMMUNITY IMPACT)

Spending of wages supported by producing direct and indirect outputs

MEASURED AREAS OF IMPACT



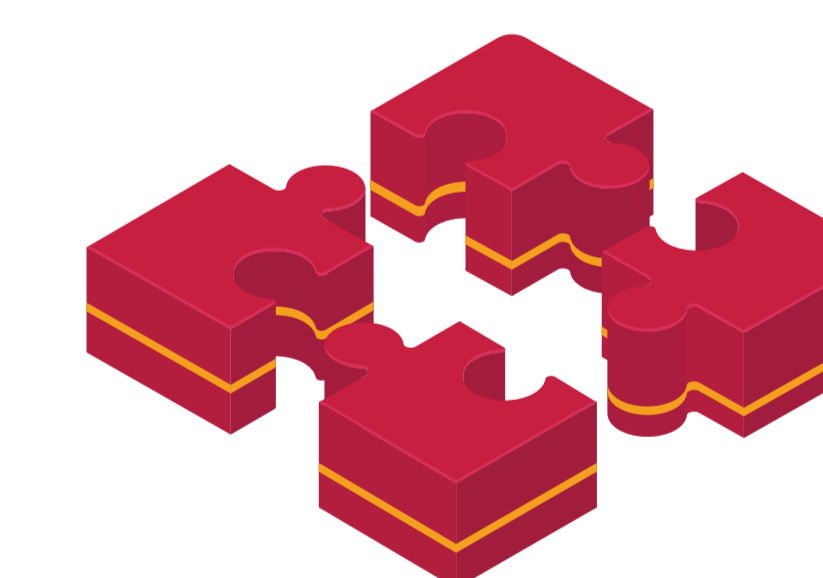
JOBS

This number represents the total full-time, part-time, and seasonal jobs supported by the Gilead supply chain of small and diverse suppliers through direct, indirect and induced impacts.



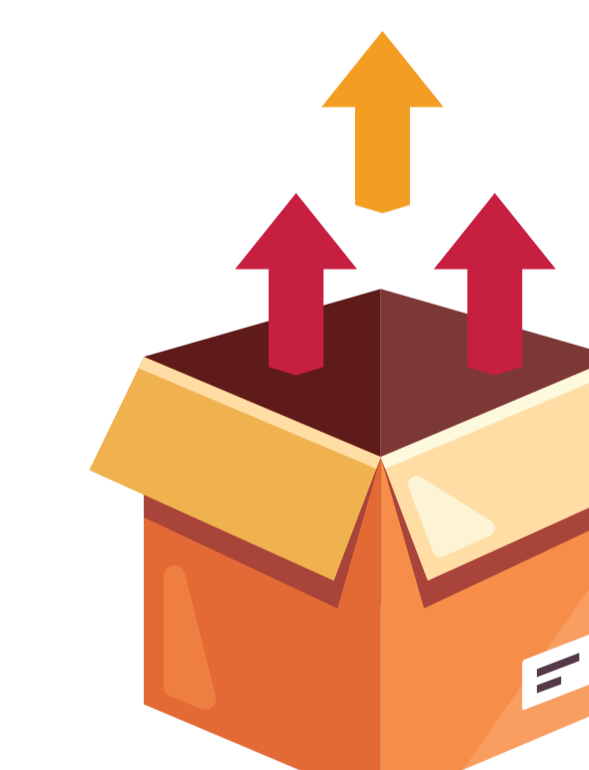
WAGES

This number represents the total value of wages, salaries and benefits supported by the Gilead supply chain of small and diverse suppliers through direct, indirect and induced impacts.



VALUE ADDED

This number represents the total GDP contributed by the Gilead supply chain of small and diverse suppliers through direct, indirect and induced impacts.



OUTPUT

This number represents the total production activities in the Gilead supply chain of small and diverse suppliers through direct, indirect and induced impacts.

ECONOMIC IMPACT QUANTIFIED



9,403

TOTAL JOBS SUPPORTED

This number represents the total full-time, part-time, and seasonal jobs supported by the Gilead supply chain of small and diverse suppliers through direct, indirect and induced impacts.



\$695,231,494

TOTAL WAGES

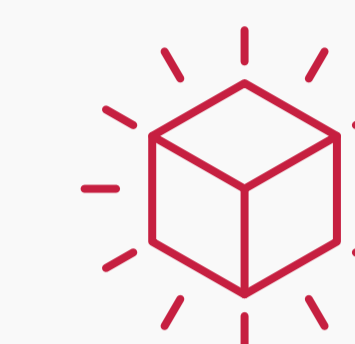
This number represents the total value of wages, salaries and benefits supported by the Gilead supply chain of small and diverse suppliers through direct, indirect and induced impacts.



\$1,254,092,023

TOTAL VALUE ADDED

This number represents the total GDP contributed by the Gilead supply chain of small and diverse suppliers through direct, indirect and induced impacts.



\$2,122,395,057

TOTAL OUTPUT

This number represents the total value of goods and services produced to satisfy the Gilead supply chain of small and diverse suppliers through direct, indirect and induced impacts.



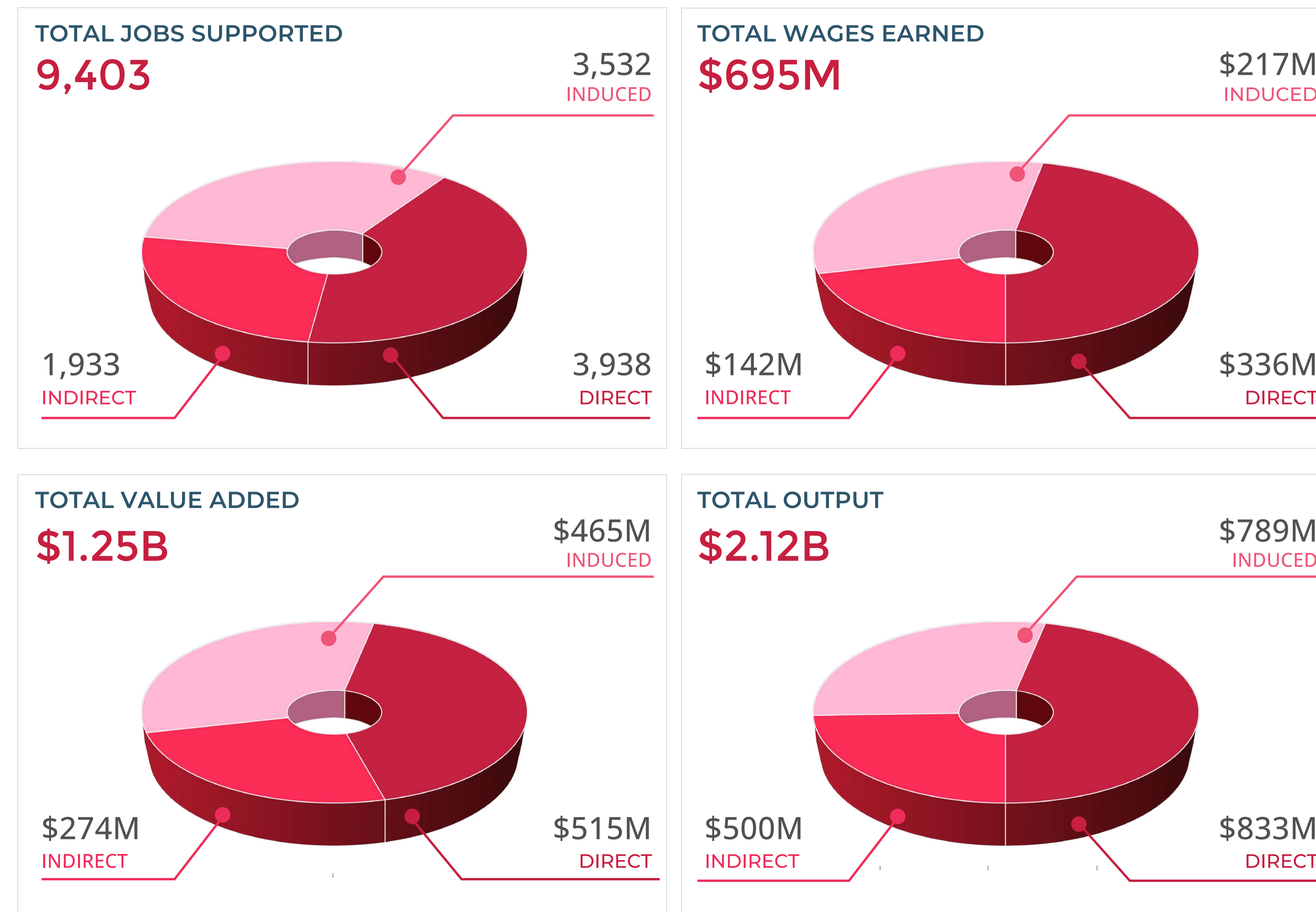
MEANINGFUL IMPACT IN THE COMMUNITIES WE LIVE AND WORK

In 2025, Gilead's direct output (direct supply chain impact) with small and diverse American companies in the US totaled over \$833M. These direct purchases generated an economic impact totaling \$2.12B in contributions to the US economy.

This total economic activity supported 9,403 American jobs and contributed \$279M in tax revenue in 2025. The economic support in the US spans across nearly every state with the most two significant employment (also called job) impacts in California (3,968) and New Jersey (867).

Table 1: 2025 National Impact of Gilead's small and diverse spend

Impact Type	Jobs Supported	Wages	Value Added	Output
Total	9,403	\$695M	\$1.25B	\$2.12B
Direct	3,938	\$336M	\$515M	\$833M
Indirect	1,933	\$142M	\$274M	\$500M
Induced	3,532	\$217M	\$465M	\$789M



IMPACT BREAKDOWN BY STATE: WE SUPPORT LOCAL

Table 2: Impacted States ranked by Total Employment

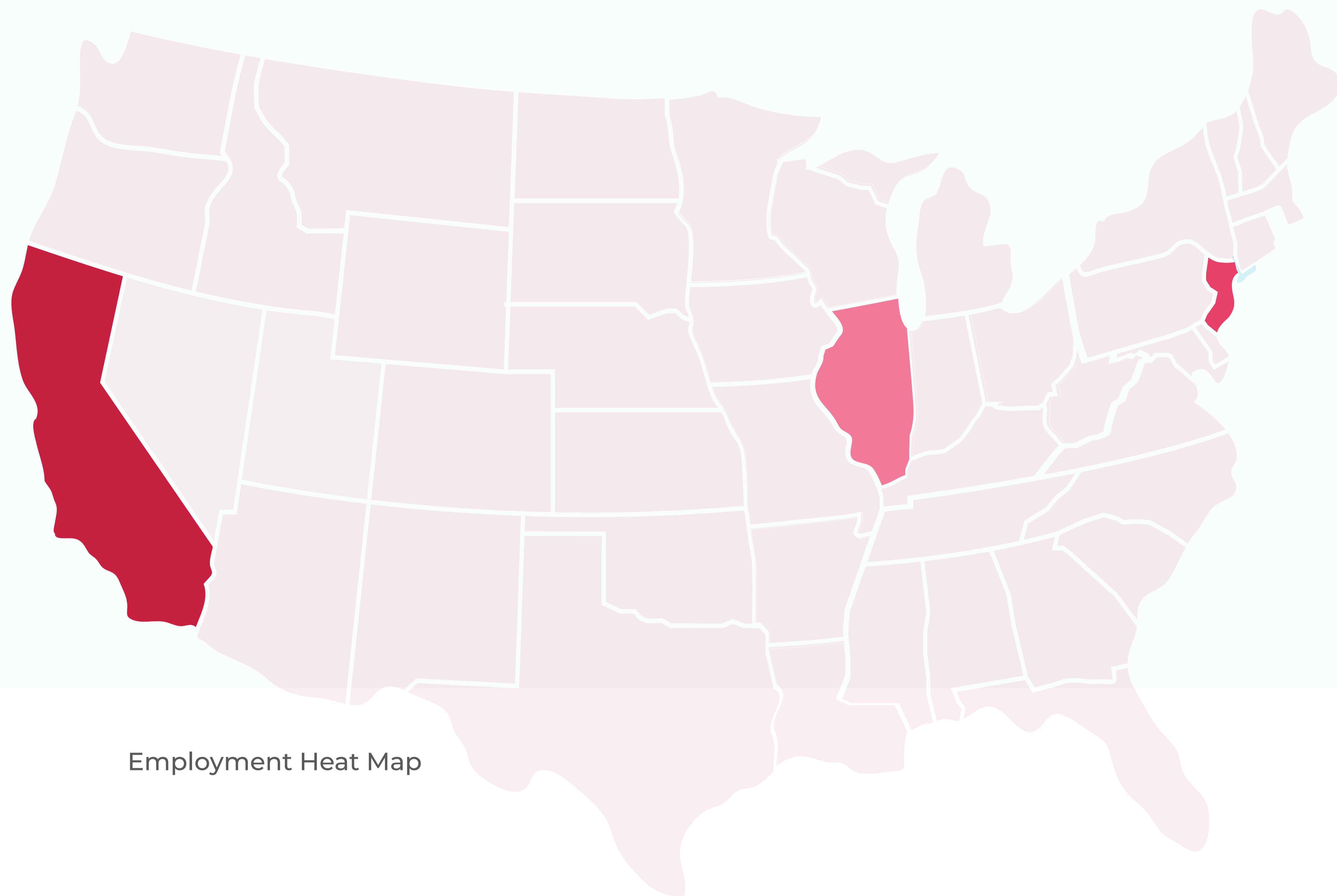
STATE	DIRECT SPEND	IMPACT FROM DIRECT, INDIRECT AND INDUCED			
		TOTAL JOBS SUPPORTED	TOTAL WAGES EARNED	TOTAL VALUE ADDED	TOTAL OUTPUT
CA	\$340M	3,968	\$282M	\$508M	\$885M
NJ	\$65M	867	\$64M	\$105M	\$167M
IL	\$69M	806	\$61M	\$107M	\$173M
NY	\$58M	595	\$44M	\$85M	\$142M
MO	\$37M	462	\$36M	\$60M	\$96M
FL	\$44M	417	\$29M	\$62M	\$97M
GA	\$29M	350	\$28M	\$46M	\$75M
PA	\$31M	320	\$25M	\$45M	\$77M
MA	\$23M	232	\$19M	\$34M	\$58M
MD	\$18M	170	\$14M	\$25M	\$45M
MI	\$15M	159	\$12M	\$23M	\$39M
TX	\$14M	148	\$11M	\$20M	\$32M
NC	\$12M	126	\$10M	\$18M	\$31M

STATE	DIRECT SPEND	IMPACT FROM DIRECT, INDIRECT AND INDUCED			
		TOTAL JOBS SUPPORTED	TOTAL WAGES EARNED	TOTAL VALUE ADDED	TOTAL OUTPUT
WA	\$14M	106	\$9M	\$19M	\$34M
WY	\$7M	93	\$7M	\$12M	\$19M
DE	\$7M	83	\$7M	\$11M	\$19M
DC	\$7M	66	\$5M	\$10M	\$16M
CO	\$6M	65	\$5M	\$9M	\$16M
VA	\$5M	62	\$4M	\$8M	\$13M
OH	\$4M	54	\$4M	\$7M	\$11M
OR	\$7M	43	\$3M	\$8M	\$20M
TN	\$4M	37	\$3M	\$6M	\$10M
CT	\$3M	37	\$3M	\$5M	\$7M
NH	\$3M	30	\$3M	\$5M	\$9M
SC	\$3M	23	\$2M	\$3M	\$7M
UT	\$2M	17	\$1M	\$2M	\$5M

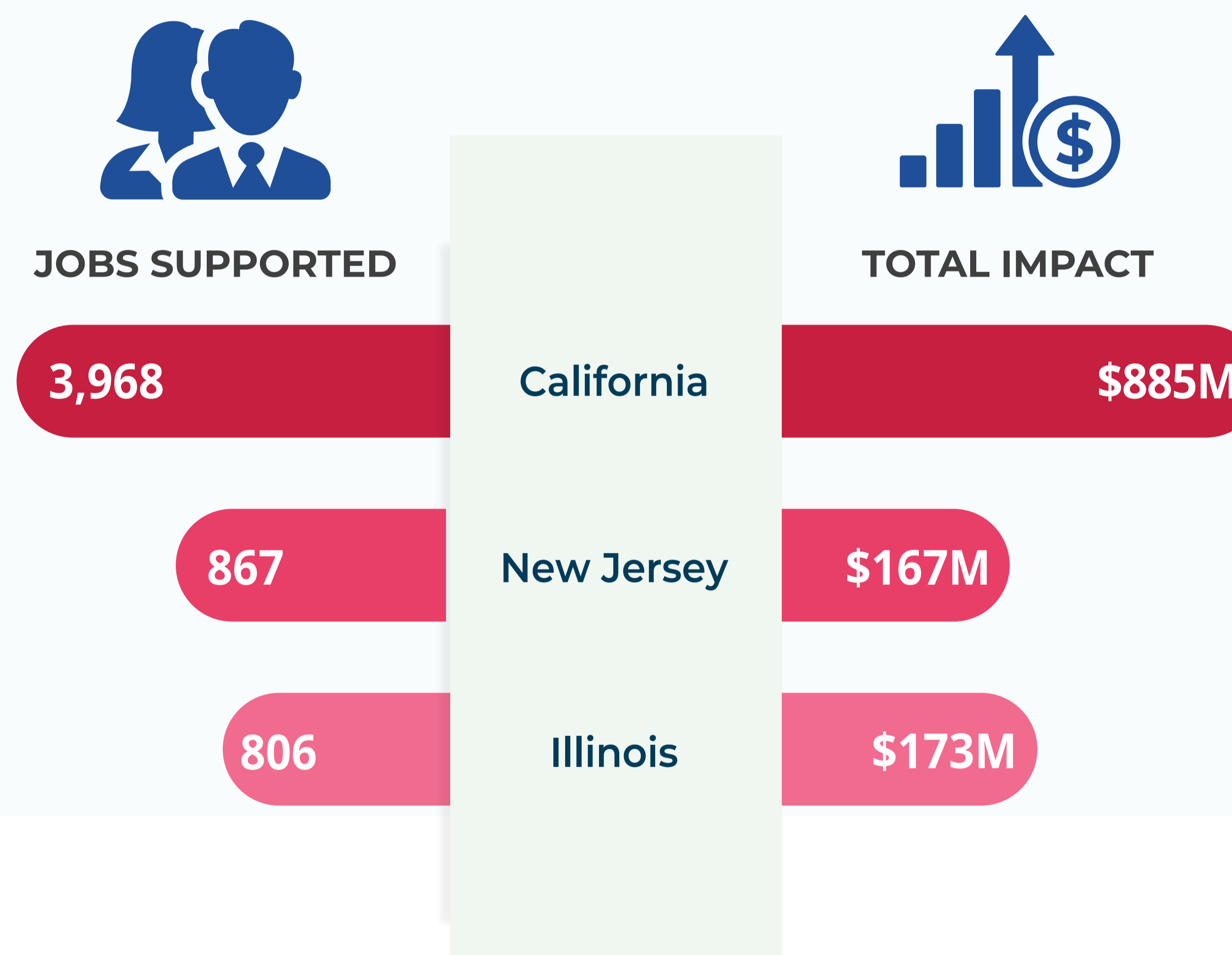
NOTE: Remaining states count for less than 3% of the total impact.

LOCAL IMPACT HIGHLIGHTS: WHERE DO WE SUPPORT MOST JOBS

The employment impact map details the support of US-based small and diverse suppliers. Darker states represent a greater number of total jobs supported by Gilead supply chain purchases. Supply Chain purchases are supporting the greatest number of jobs in California, New Jersey and Illinois. The results do not reflect any employees working directly for Gilead operations, only the supply chain of all Gilead entities with small and diverse suppliers.



Employment Heat Map



Gilead's Local Intent

Our intent is to support the communities where we work and live by supporting meaningful jobs and economic progress.

Employment, Employment Compensation, Value added, and Output are estimated using IMPLAN's national industry multipliers.

State with the most impact across the board
CALIFORNIA



Jobs
3,968



Wages
\$282M



Total Output
\$885M

WHICH BUSINESS AREAS ADD THE MOST LOCAL IMPACT?

Top Areas:

Management consulting services supported **791 jobs** and had the highest value added of **\$97M** and also had the highest economic impact of **\$137M**

Table 3: Top 10 Impacted Industries by Jobs Supported

Business Area	Jobs Supported
Management consulting services	791
Food service - restaurants and other food and drinking places	630
Employment services	601
Construction	525
Custom computer programming services	446
Advertising, public relations, and related services	311
Other real estate	270
Scientific research and development services	248
Computer systems design services	167
Other educational services	160

Table 4: Top 10 Impacted Industries by Labor Income

Business Area	Labor Income
Management consulting services	\$96M
Construction	\$59M
Custom computer programming services	\$56M
Advertising, public relations, and related services	\$56M
Employment services	\$44M
Scientific research and development services	\$43M
Food service - restaurants and other food and drinking places	\$33M
Other real estate	\$24M
Monetary authorities and depository credit intermediation	\$24M
Computer systems design services	\$24M

Table 5: Top 10 Impacted Industries by Total Value Added

Business Area	Value Added
Management consulting services	\$97M
Construction	\$60M
Custom computer programming services	\$58M
Advertising, public relations, and related services	\$57M
Employment services	\$44M
Scientific research and development services	\$44M
Food service - restaurants and other food and drinking places	\$37M
Other real estate	\$26M
Monetary authorities and depository credit intermediation	\$25M
Computer systems design services	\$24M

Table 6: Top 10 Impacted Industries by Total Output

Business Area	Total Output
Management consulting services	\$137M
Construction	\$112M
Scientific research and development services	\$83M
Advertising, public relations, and related services	\$81M
Custom computer programming services	\$75M
Food service - restaurants and other food and drinking places	\$64M
Employment services	\$64M
Other real estate	\$62M
Computer systems design services	\$36M
Hospitals	\$35M



TAX IMPACT



Gilead had an overall tax impact of \$279 million by diverse spend which was generated by **\$2.12 billion in total output** as illustrated in Table 1 and Table 7.

Tax Impact Breakdown

The tax impact report estimates total taxes paid by government type and by tax type, by the sectors and institutions affected in an impact scenario. The tax impacts are calculated using the latest fiscal infrastructure in the IMPLAN database.

Table 7 Taxes by institution receiving

Description	Employee Compensation	Production & Imports Tax	Households	Corporations	Proprietor Income	Total
Federal	\$84M	\$3M	\$79M	\$18M	\$5M	\$189M
State & Local	\$1M	\$65M	\$18M	\$6M	\$0	\$90M
Total	\$86M	\$68M	\$96M	\$24M	\$5M	\$279M

Table 8: Federal tax

Description	Employee Compensation	Production & Imports Tax	Households	Corporations	Proprietor Income	Total
Direct	\$41M	\$796K	\$39M	\$5M	\$3M	\$88M
Indirect	\$17M	\$721K	\$16M	\$5M	\$951K	\$39M
Induced	\$26M	\$2M	\$24M	\$9M	\$1M	\$62M
Total	\$84M	\$3M	\$79M	\$18M	\$5M	\$189M

Table 9: State and local tax

Description	Employee Compensation	Production & Imports Tax	Households	Corporations	Proprietor Income	Total
Direct	\$608K	\$15M	\$9M	\$2M	\$0	\$26M
Indirect	\$255K	\$14M	\$4M	\$2M	\$0	\$19M
Induced	\$389K	\$35M	\$5M	\$3M	\$0	\$44M
Total	\$1M	\$65M	\$18M	\$6M	\$0	\$90M

GLOSSARY

Direct Impact: Direct impact is the initial change from an economic activity (e.g., vendor spending). Applying these initial changes to the multipliers in IMPLAN will then display how a region will respond economically to them.

Employee Compensation: Employee compensation in IMPLAN is the total payroll cost of employees. This includes wages and salaries, all benefits (e.g., health, retirement) and payroll taxes (both sides of social security, unemployment insurance taxes, etc.). Also referred to as fully loaded payroll.

Employment: Employment (also called Job) in IMPLAN includes full-time, part-time, and seasonal workers and therefore does not represent full-time equivalents (FTEs). IMPLAN employment includes wage and salary employees as well as proprietors (self-employed individuals and unincorporated business owners).

Event Year: Model year reflects the year of the IMPLAN data. If this year differs from the year of your IMPLAN model data, IMPLAN will adjust your dollar values accordingly via its built-in deflators.

Indirect Impact: Indirect impact is the industry-to-industry purchases in the supply chain that stem from the initial vendor spending. Indirect impact occurs in indirect suppliers in all lower tiers.

Indirect impact not only benefits the local economy where vendor businesses are located. It also benefits other regions when vendors and their intermediate suppliers purchase products and services outside of their local states, creating spillover effects.

Moreover, a portion of the spillover effects may circle back to the original state, creating feedback effects.

For example, if the direct impact is the construction of a building, the first round of indirect impact will include a purchase of ready-mix concrete. This purchase of ready-mix concrete spurs the ready-mix concrete manufacturing industry in turn to purchase more sand and gravel. This purchase of sand and gravel is part of the second round of indirect output. This cycle of spending continues to work its way backward through the supply chain, with each round of impact getting smaller and smaller until all money leaks from the local economy by way of imports, taxes, and profits, which do not generate additional impact locally.

IMPLAN does not assume that all input purchases are made from local businesses; the proportion of local vs. non-local purchases varies by commodity and is built into the IMPLAN system.

Induced Impact: Induced impact stems from household spending of labor income, after removal of taxes, savings, and commuter income. The induced impact is generated by the spending of the employees within the business' supply chain. Note that IMPLAN models account for commuting patterns; thus, induced impact will only reflect the spending of wages from residents. IMPLAN removes payroll taxes, personal taxes, and savings before allowing the remainder to be spent on goods and services. IMPLAN also accounts for imports and does not assume that all purchases of goods and services are made within the study area.

Labor Income: The sum of employee compensation and proprietor income.

Multipliers: Multipliers are the basis for the input-output (I-O) models such as IMPLAN. Expressed as rates of change, multipliers describe how a given change in a particular industry generates impacts in the overall economy (e.g., for every dollar spent in the economy an additional \$0.25 of economic activity is generated locally, implying a multiplier of 1.25.)

Other Property Income: OPI represents corporate profits and depreciation.

Output: Total value of a product or service.

Proprietor Income: Proprietor income consists of payments received by self-employed individuals and unincorporated business owners.

Taxes on Production and Imports less Subsidies: TOPI is one of the four components of value-added. It includes sales and excise taxes, customs duties, property taxes, motor vehicle licenses, severance taxes, other taxes, and special assessments.

Value Added: Value-added is the sum of employee compensation, proprietor income, other property income, and TOPI. Value-Added is analogous to GDP.

Data used for this Report

This report was commissioned by Gilead and prepared by VIVA USA INC (VIVA) using IMPLAN's database as given below for economic impact analysis.

IMPLAN Data Year: **2024**

Gilead Spend Data Year: **Oct 2024 – Sept 2025**
 (small/diverse suppliers only, though may not represent complete population of all Gilead small/diverse)

Areas in Model: **United States**

The current version of the IMPLAN software is only able to estimate the spillover and feedback effects at the national level. They cannot be tracked to specific states and thus being incorporated into the indirect and induced impacts at the national level.

References

All results provided in this report are based on the values and assumptions provided by the customer and information from the following sources. Neither VIVA nor IMPLAN makes any declaration of the accuracy of the provided values.

1. IMPLAN Glossary (<https://support.implan.com/hc/en-us/categories/1500000107962-Glossary>)
2. Miller, Ronald E., and Peter D. Blair. Input-output analysis: foundations and extensions. Cambridge university press, 2009.



VIVA USA INC

📍 3601 Algonquin Rd, Suite 425, Rolling Meadows, IL 60008

✉ sales@viva-it.com

☎ (847) 368-0860